



## Medical Articles

### Food, Plants and Drugs Toxic to Animals

#### Foods Toxic to Animals Plants Toxic to Animals

The list below has been collected from the Humane Society of America, Veterinary Pet Insurance, Healthy Pet.com and the ASPCA websites. Their websites are listed below.

[www.humanesociety.org/animals/resources/tips/foods\\_poisonous\\_to\\_pets.html](http://www.humanesociety.org/animals/resources/tips/foods_poisonous_to_pets.html)  
[www.healthypet.com/PetCare/PetCareArticle.aspx?art\\_key=655a2b98-fe3f-4162-b9e4-af262ec76c7c](http://www.healthypet.com/PetCare/PetCareArticle.aspx?art_key=655a2b98-fe3f-4162-b9e4-af262ec76c7c)  
[www.aspc.org/pet-care/ask-the-expert/ask-the-expert-poison-control/people-foods.html](http://www.aspc.org/pet-care/ask-the-expert/ask-the-expert-poison-control/people-foods.html)  
[www.petinsurance.com](http://www.petinsurance.com)

Please be aware the following is not a complete list, but a summary of some of the most common.

#### Foods Toxic to Animals

##### **Alcoholic beverages(including rubbing alcohol, alcoholic beverages, and bread dough(rising dough)**

Signs of intoxication may include dangerous drops in blood sugar, blood pressure and body temperature, vomiting, wobbly gait, depression and disorientation as well as the odor on its breath. High doses may result in heart arrhythmias, respiratory failure, seizures and tremors and death.

##### **Avocados**

This results in a cardiovascular toxicity. Symptoms include difficulty breathing, abdominal enlargement, abnormal fluid accumulation in the chest, abdomen and pericardium.

##### **Caffeine(including coffee, tea, energy drinks and diet pills)**

Symptoms include restlessness, hyperactivity, muscle twitching, excessive panting, elevated heart rate and blood pressure and seizures.

##### **Chocolate**

Chocolate can cause vomiting, diarrhea, hyperactivity, panting, abnormal heart rhythm, tremors, seizures; and even death in severe cases.

##### **Fatty foods**

Dogs love rich and fatty foods, just like we do. They find these foods in the trash, or receive them as treats or leftovers. Foods high in fat can cause vomiting, diarrhea and pancreatitis(inflammation of the pancreas). This is especially true in Miniature Schnauzers, Shetland Sheepdogs, Cocker Spaniels and Yorkies.

##### **Grapes and Raisins**

Just a few grapes and even fewer raisins can cause kidney damage and can even be deadly.

##### **Macadamia nuts**

Although the cause of the toxicity is unknown, as few as 6 nuts can cause symptoms such as lethargy, pale gums, vomiting and loss of muscle control.

##### **Nutmeg**

Symptoms include tremors, seizures and nervous system abnormalities and high levels can be fatal.

##### **Onions and Garlic**

Even the powdered form can be dangerous. Small amounts can result in gastrointestinal upset, where large amounts can cause anemia caused by a weakening of his red blood cells.

##### **Salt**

Sources can include eating household play dough, ocean salt water and paint balls. Salt toxicity can result in neurological signs such as incoordination, seizures and brain swelling. This needs to be treated very carefully by a veterinarian.

##### **Sweeteners(such as Xylitol)**

Found in many sugarless gums and candies, ingestion can cause a severe drop in blood sugar, vomiting, weakness, loss of muscle control, seizures and liver failure. Cases of intoxication should be taken to a veterinarian or emergency clinic immediately.

##### **Yeast Dough**

Unbaked dough can expand in your pet's stomach or intestines. The released gases can result in nausea, vomiting, diarrhea and bloat. If the fermentation produces alcohol, this could lead to alcohol toxicity.

#### Plants Toxic to Animals



##### **Autumn Crocus**

The Autumn Crocus is highly toxic and can cause severe vomiting, gastrointestinal bleeding, liver and kidney damage and respiratory failure.



##### **Azalea**

Just a few leaves can cause vomiting, diarrhea and excessive drooling which can lead to coma and death.



##### **Cyclamen**

If ingested, can cause severe vomiting.



##### **Daffodil**

Ingestion can cause severe vomiting, diarrhea and abdominal pain. Severe reactions can include abnormal heart rate or respiratory changes.



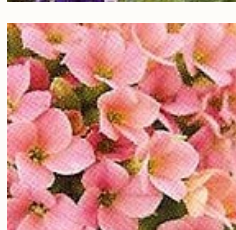
##### **Dieffenbachia**

This plant can cause intense oral irritation, drooling, nausea, vomiting and difficulty swallowing.



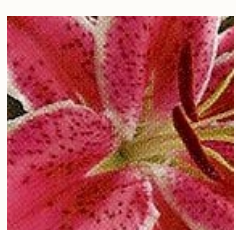
##### **Hyacinth/Tulip**

The bulb is the most toxic part of this plant. Ingestion can affect breathing and cause severe vomiting, diarrhea and an increase in heart rate.



##### **Kalanchoe**

Ingestion can cause vomiting, diarrhea and heart arrhythmias.



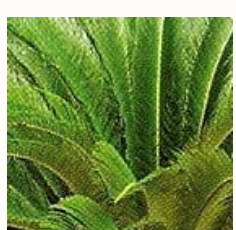
##### **Lilly**

Certain types of lilies-including tiger, day, Asiatic, Easter and Japanese lilies-are highly toxic to cats. Severe kidney failure can result from ingesting just a small amount.



##### **Oleander**

The leaves and flowers are extremely toxic and can cause severe vomiting, decreased heart rate and possibly death.



##### **Sago Palm**

The leaves and seeds can cause vomiting, bloody stools, damage to the stomach lining, severe liver failure and, in some cases, death.